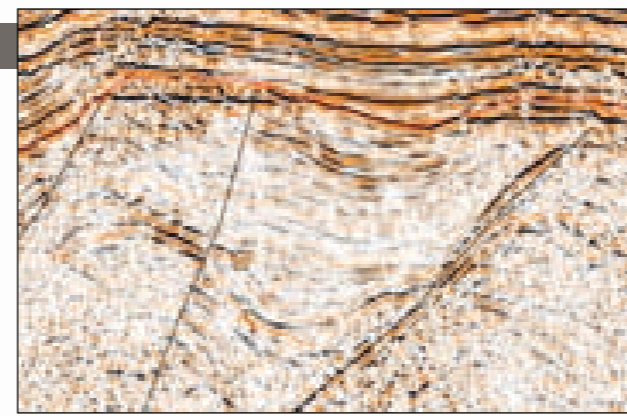
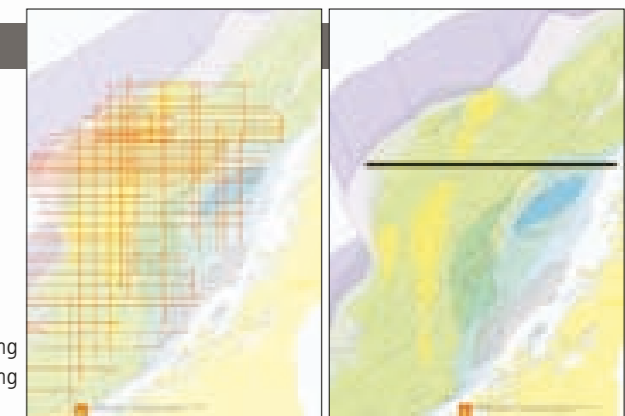


Offshore Mid-Norway

In 2004-2006 Fugro Multi Client Services acquired the first three phases (total 18,434 km) of a 2D programme, Mid-Norway Regional (MNR), aiming at covering the Mid-Norway continental shelf with long cable (10 km) and long recording (10 seconds two-way time) seismic data. The shelf contains mature, underexplored and frontier exploration areas. The regional extent and recording length of the lines provide a structural overview and deep imaging previously not seen offshore Mid-Norway. wThey will thus constitute an important tool for mapping the remaining exploration potential.



Flatspot within the Cretaceous on the Gjallar Ridge, (close-up of the rectangle on seismic).



The seismic line is acquired in the northern part of the Norwegian Sea covering tectonic elements from the Trøndelag Platform in the east to the Vøring Marginal High in the west.

