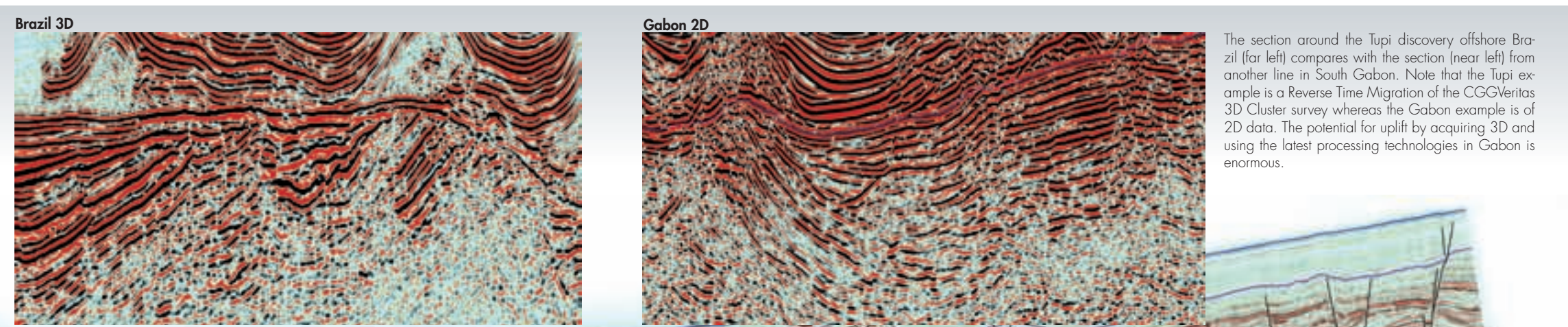


PRE-SALT BASINS IDENTIFIED IN GABON DEEPWATER AREA

In support of the 10th Gabonese Licensing Round planned to be opened in May 2010, new seismic data, combined with an integrated study using potential field and geological data, has revealed significant pre-salt sediments in this complex basin. The pre-salt data resembles the geology observed around recent Brazilian pre-salt discoveries.

See full story starting on page 39.

The main fold-out section below is a test line acquired in 2008 with parameters designed to maximize low-frequency energy transmission through the salt. Prestack time migration and prestack depth migration processing was performed. The line demonstrates that significant improvements are achievable in pre-salt imaging, compared to existing seismic data. Deep basement geometry is clearly visible and well imaged. This provides important structural information on the deformational history during the rifting phase of the opening of the South Atlantic. Significant pre-salt sediment section is present in tilted fault blocks.



The section around the Tupi discovery offshore Brazil (far left) compares with the section (near left) from another line in South Gabon. Note that the Tupi example is a Reverse Time Migration of the CGGVeritas 3D Cluster survey whereas the Gabon example is of 2D data. The potential for uplift by acquiring 3D and using the latest processing technologies in Gabon is enormous.

