

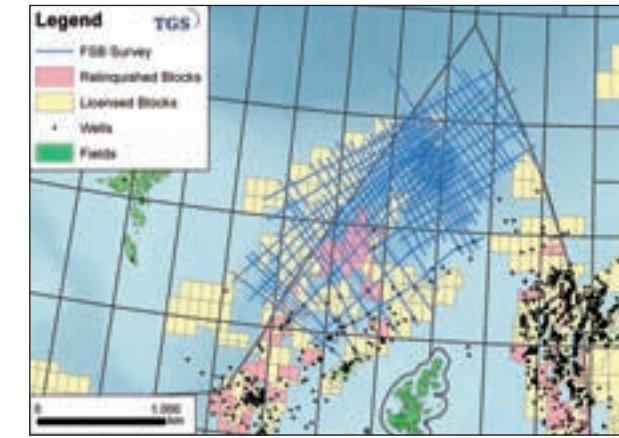
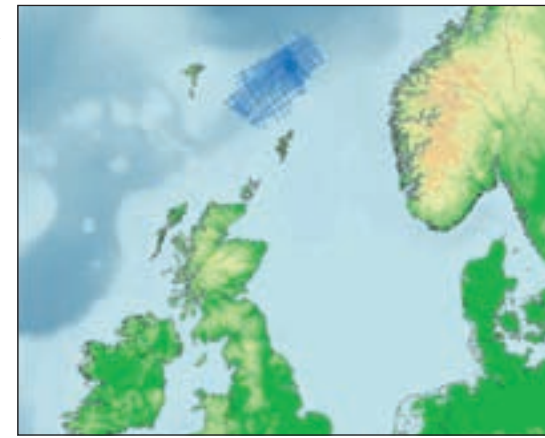
# SHETLAND ROCKS!

## Improved Sub-Basalt Structural Imaging

Extensive thick sequences of basalt dominate the northwest flank of the Faroe Shetland Basin. Recent reprocessing of this long offset data dramatically improves the interpretability of the sub-basalt structures.

*See full story starting on page 39.*

Location of the Faroe Shetland Basin (FSB) dataset



FSB dataset line location map



FUGLEEOYE RIDGE SYSTEM ?	FAROE SUB - BASIN ?	FUGLEEOYE RIDGE SYSTEM ?	FAROE BASIN ?	EAST FAROE HIGH ?	NORTH CORONA SUB - BASIN	CORONA RIDGE	FLETT SUB - BASIN	FLETT RIDGE COMPLEX	FOULA SUB - BASIN	NORTH RONA-RIDGE	WEST SHETLAND BASIN
					FAROES CS	UKCS			Glenlivet look-alike		

