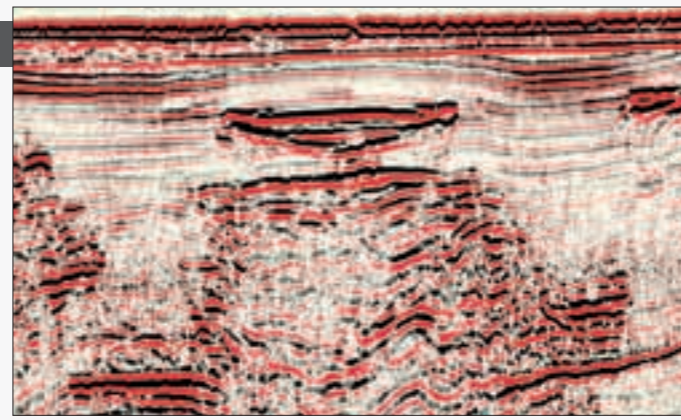


The Norwegian Barents Sea

For the second year in a row Fugro has acquired long offset 2D seismic data in the Norwegian sector of the Barents Sea (Norwegian Barents Sea Regional, NBR 2007). These regional lines create a grid that enables the explorationist to tie licensed blocks in mature areas with open blocks in frontier areas. These datasets also give room for creating new ideas about the geological evolution of the area in general and the exploration potential in particular.

An intriguing seismic example of shallow gas with a possible flat spot. Could this be a new prospect in the Barents Sea?



Outcrops on the Svalbard archipelago make excellent reference to the geology of the Barents Sea. This year, as every year, petroleum geologists go there for a week at a time to get the highlights. Climbing steep mountain slopes is part of the game.



Photo: Kjetil Trygve Thon

The mountain Milderhuken on Svalbard shows fold structures within Triassic shales and sandstones above Permian layers.



Photo: Kjetil Trygve Thon

